

Zucker Hall - Lighting Facilities

Lighting Information

The lighting system is in two parts.

Fixed Orchestral: Provides a full cover of the stage in open white.

These lanterns are located in ceiling panel and cannot be refocused or removed.

Production Lighting Rig:

The Production Lighting Rig is available for use below the Fixed Orchestral system.

The Production Lighting Rig is not silent.

Control System & Network:

Three control positions

1 at FOH

1 at the control booth

1 on stage

Each position contains the following connectors:

4 DMX male connectors

1 DMX female connector

2 etherCON RJ45 Connector

1 220v 16amp Israeli socket

Light Network:

All ethernet line from control positions go to patch panel in main power room.

Each box truss contains 1 ethernet line from patch panel in main power room.

6 ethernet line from stage level go to patch panel in main power room.

2 ethernet line from Dimmer room go to patch panel in main power room.

DMX:

All DMX line from control positions go to patch panel in main power room.

Each box truss contains 2 dmx line from patch panel in main power room.

6 DMX line from stage level go to patch panel in main power room.

1 DMX line from Dimmer room go to patch panel in main power room.

Quantity	Equipment	Comments
1	grandMA2 ultra-light	
1	4 way artnet to dmx	Main power room
3	2 way artnet to dmx	BOX Truss 1,2,3
1	Managed Gigabit Ethernet switch with 10 - 10/100/1000Mbps Ethercon ports	Main power room
2	DMX splitters	Main power room



Charles Bronfman Auditorium
Tel Aviv Culture Center

Zucker Hall - Lighting Facilities

Dimmers:

Located in the dimmers room and controlled via DMX

All Dimmer lines ends with Israeli sockets

- 12 2kw dimmers box truss 1.
- 12 2kw dimmers box truss 2.
- 12 2kw dimmers box truss 3.
- 8 2kw dimmers on stage.

Stage power:

Single phase 16AMP Israeli outlet controlled from main power room.

18 on Each box truss for total of 54

6 on stage floor

6 on main power room for auxiliary lighting gear

Single phase 16AMP Israeli outlets go to guest patch panel (powerCON) in main power room.

12 on Each box truss for total of 36

Three Phase Power – Lighting:

Located in main power room.

One (1) - CEE 125A 400V 5P

Two (2) - CEE 63A 400V 5P

Two (2) - CEE 32A 400V 5P

Two (2) - CEE 16A 400V 5P

Production Lighting:

12 ETC ColorSource Spot

12 Rush par 2 rgbw zoom

12 Martin MAC Aura XB

8 Martin MAC Quantum Profile

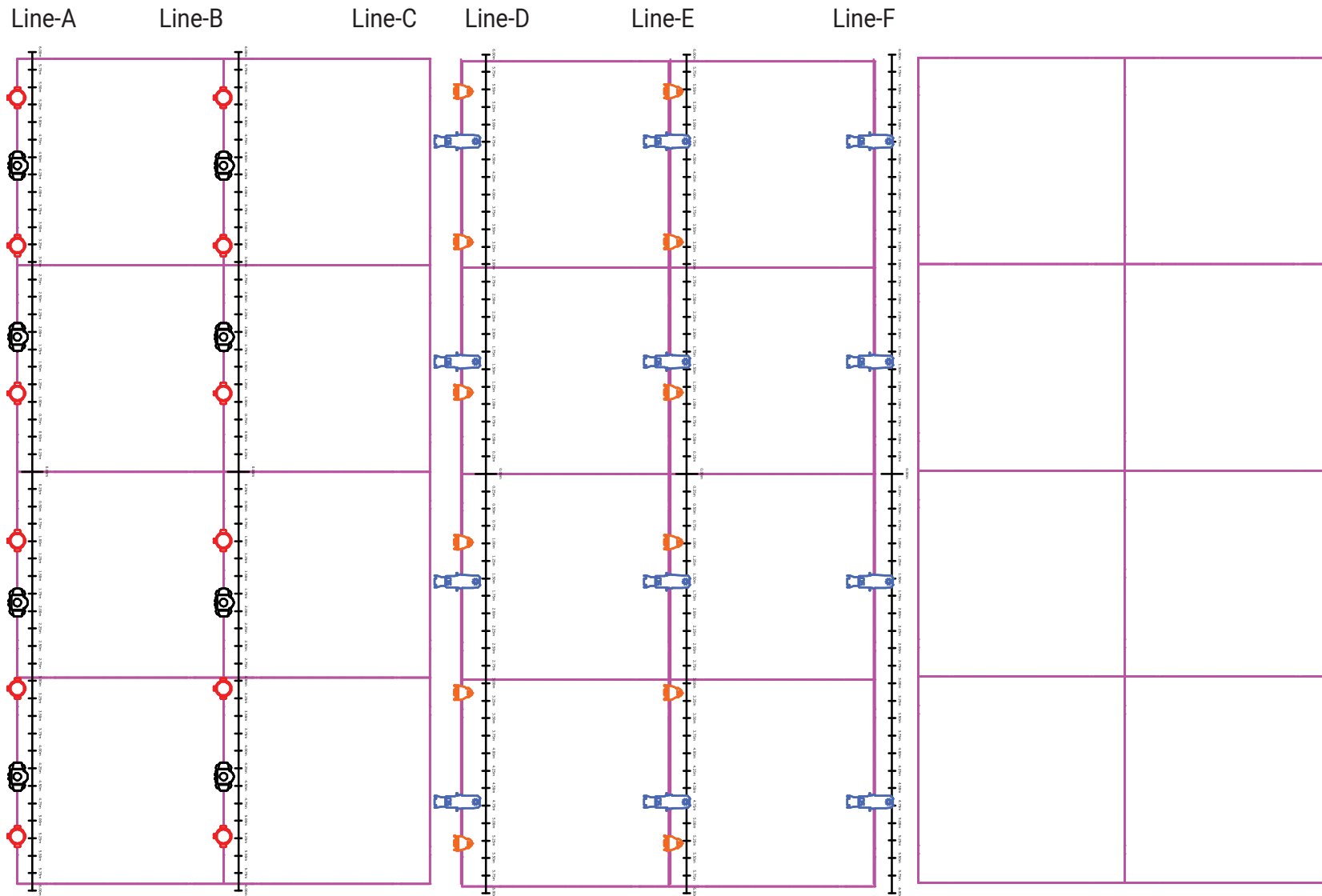
4 martin Rush MH 1 profile

1 Martin JEM Compact Hazer Pro



Charles Bronfman Auditorium
Tel Aviv Culture Center

Zucker Hall - Lighting Facilities



Legend • Mac Quantum Profile -23.20 kg x 8 • MAC Aura XB -6.5 kg x 12 • ColorSource Par . -3.77kg x 12 • ColorSource Spot,. -7.77 kg x 12



Charles Bronfman Auditorium
Tel Aviv Culture Center

Zucker Hall- Multimedia System specification

Sound:

system manufactured : L-ACOUSTICS France

Speaker system including:

	Description	Model	Quantity	Notes
1	L-R main cluster	Kiva2	16	8 on each side
2	L-R fly subs	SB15m	4	2 on each side
3	G.SUBS	SB18	4	2 on each side
4	FRONT FILL	X8	3	
5	speakers balcony	6X X8 6X 5XT	12	
6	AMPLIFIERS AND PROCESSORS	LA8 ,LA4x		according to the speaker manufacturer's

The main clusters include a motor system (forward / backward) depending on the stage depth required (4m / 6m)

The system will work in 2 operating modes to select the user:

1. L / R TO ALL

2. L / R + SUB AUX

(If you select preset with "AUX" (additional input) all other array speakers will be fed from L / R inputs)

A drawing with position of the speakers is attached

Projection:

Rolling, Screen image dimensions: 550 cm, height 350 cm

Projector: SONY, 6000 ANSI 1920/1080 resolution

CRESTRON DM routing system (controlled by the control system)

CCTV:

PTZ camera - to 1 monitors in green room

Hearing aid system:

X SENNHEISER IR PROJECTORS4

Control system:

AMX

A central controller that controls all the systems (sound, projection, sound, etc)



Charles Bronfman Auditorium
Tel Aviv Culture Center

Fixed touch screen 15 "at the operating position -

Stage equipment list: (will be provided by appointment only)

	Description	Quantity	Model
1	Microphone stand	16	K&M S210/9B
2	Dynamic microphone for singing	8	SM58
3	Dynamic microphone for musical instruments	4	SM57
4	Dynamic microphone for musical instruments	4	Audix I5
5	Drum Microphone	1	Audix D6
6	Microphone condenser	6	AKG C451
7	Direct connection box	8	BSS103
8	Monitor "12	6	L-ACOUSTICS X12
9	Monitor "15	2	QSC KW152
11	Wireless set	1	qlxd +wl184
12	Wireless set	1	qlxd+sm58
13	Digital Mixer	1	AVID S6-24
14	Digital mixer - 48/24 stage box	1	AVID