



## Charles Bronfman Auditorium – Technical Data

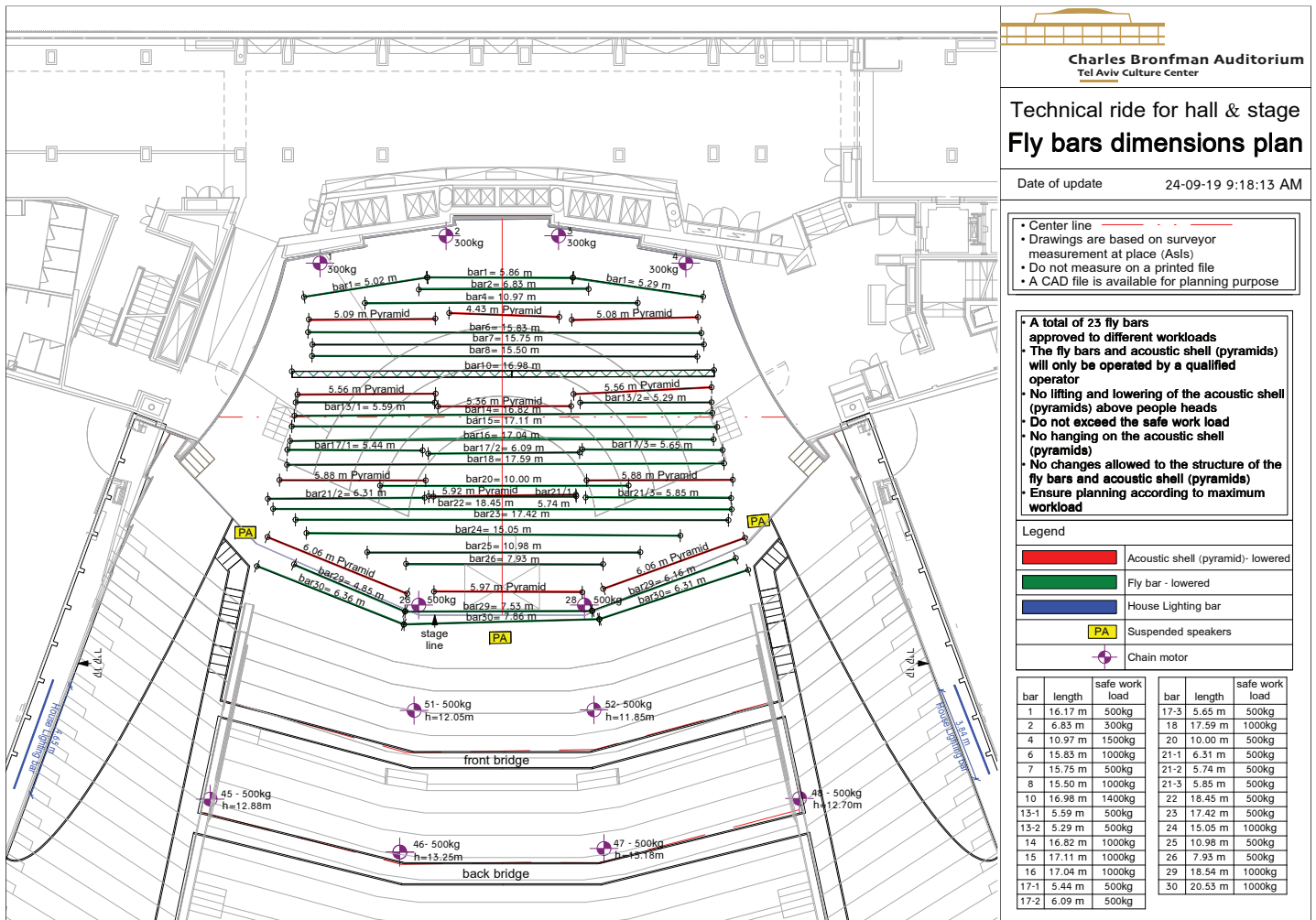
### Fly bar system – stage

A motorized, computer-controlled fly bar system is located above the 12 stage acoustic shell units.

The system is electrical and includes power sockets connected to the dimmers room.

There are 23 fly bars in total for different loads.

See attached blueprint for more information.





**Charles Bronfman Auditorium**  
Tel Aviv Culture Center

## **Stage Power System**

2 outlet power boxes located backstage, one on each side of the stage entrances, provide all stage needs.

The panels are equipped with three-phase sockets:

2 x 125Ax3  
2 x 63Ax3  
2 x 32Ax3

} On each side

6 single-phase, 16A Israeli type sockets

An additional panel is located in the power room above and equipped with the following:

4 x 125Ax3

1 x 32Ax3

7 x 16Ax3

6 single-phase, 16A Israeli type sockets

1x Martin M1 lighting board located at the stage left entrance

A patch panel system is installed backstage.

An additional lighting patch panel is installed in the upper dimmer room.

## **Lighting room**

The dimmers room is connected to the panel at the back of the stage.

The lighting booths are located behind the middle of Row 20 and behind the middle of Row 37.

## **Sound system**

A permanent L-ACOUSTICS speaker system is installed, including:

Main L&R: 8 x Kudo units flying on each side

Center cluster: 11 x Kara units flying

Front Fill: 8 x 8XI units at the front of the stage

4 x SB18 sub bass units on each side of the stage

L-ACOUSTICS LA 8 processors / amps

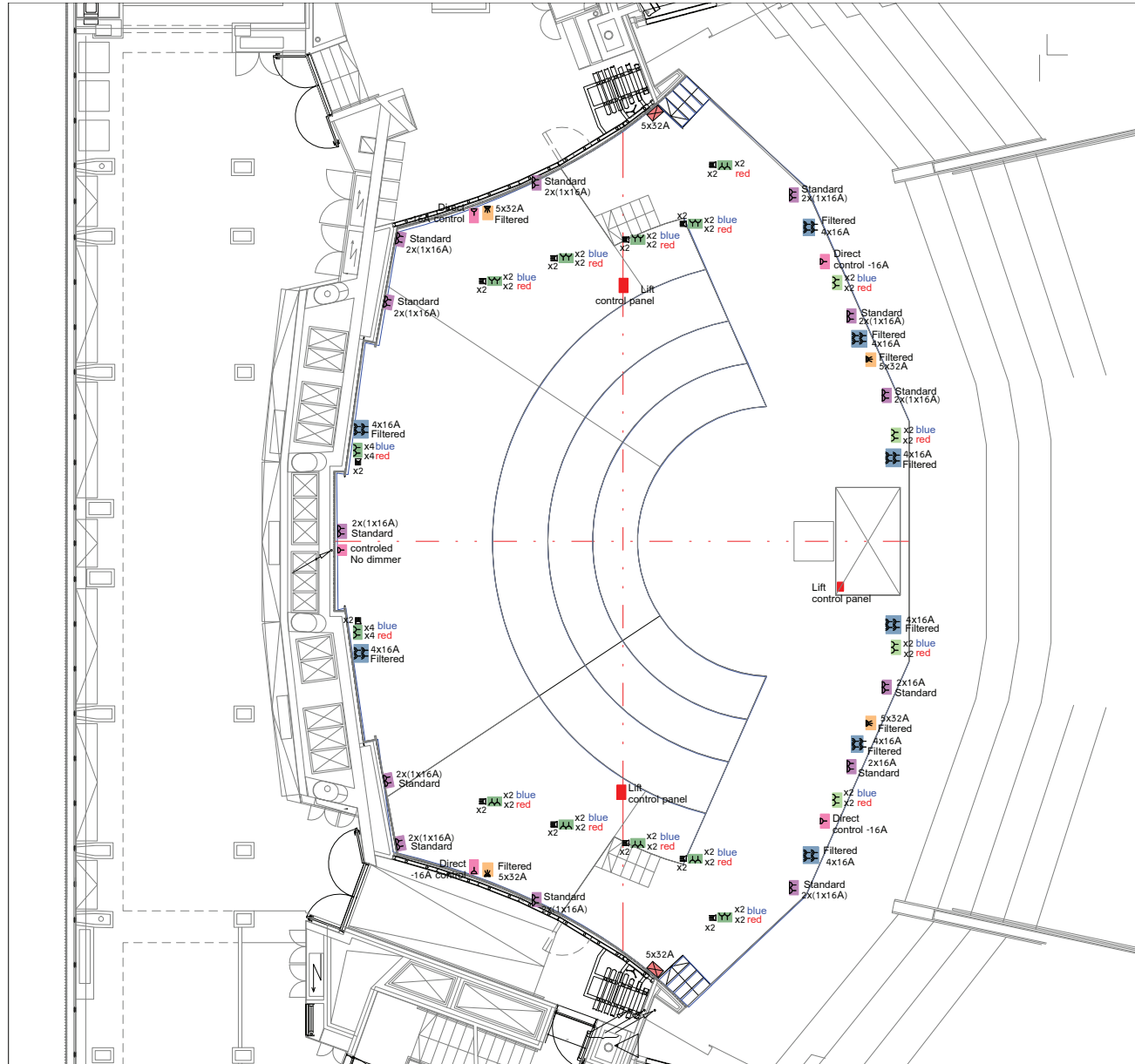
Mixing position located in Block C, in the middle of Row 20.

If sound, lighting and video consoles are used, it is recommended not to sell seats in Block C, rows 19 and 20.

Stage electrical plan attached.



## Stage Electrical Plan



## Technical ride for hall & stage Sage power plan

Date of update 24-09-19 9:18:11 AM

- Center line
- Drawings are based on surveyor measurement at place (ASIs)
- Do not measure on a printed file
- A CAD file is available for planning purpose

Electric Legend	
<u>Lighting socket box 50/40 cm</u>	
4 lighting sockets for the house dimmers 4 lighting sockets for guest dimmers 2 communication sockets for lighting control DMX + Ethernet	
<u>Lighting socket box 50/25 cm</u>	
2 lighting sockets for home dimmers 2 lighting sockets for guest dimmers 2 communication sockets for lighting control DMX + Ethernet	
<u>2 standard 16Amp Sockets</u> No filter	
<u>Filtered power socket</u> 5 x 32Amp	
<u>Direct socket controlled by electric cabin</u> No dimmer	
<u>Stage lift control box</u>	
<u>Standard power socket 5 x 32Amp</u> Integrated in wall cover h=+145cm	
<u>multiple adaptor</u> 230V / 16Amp	
<u>multiple adaptor</u> 230V / 16Amp connected to electric cabin	
<u>multiple adaptor</u> 230V / 16Amp Connected to guests' dimmer system	
<u>Three-phase multiple adaptor</u> 400 / 380V-5 x 32Amp Online and with top	
<u>Direct controlled - After touch on board</u> No dimmer	
<u>Filtered two coil transformer</u>	
<u>DMX socket outlet port</u>	



**Charles Bronfman Auditorium**  
Tel Aviv Culture Center



### **Hydraulic stage system**

The hydraulic stage system enables modular lifting of each stage separately, to a maximum height of 100 cm.

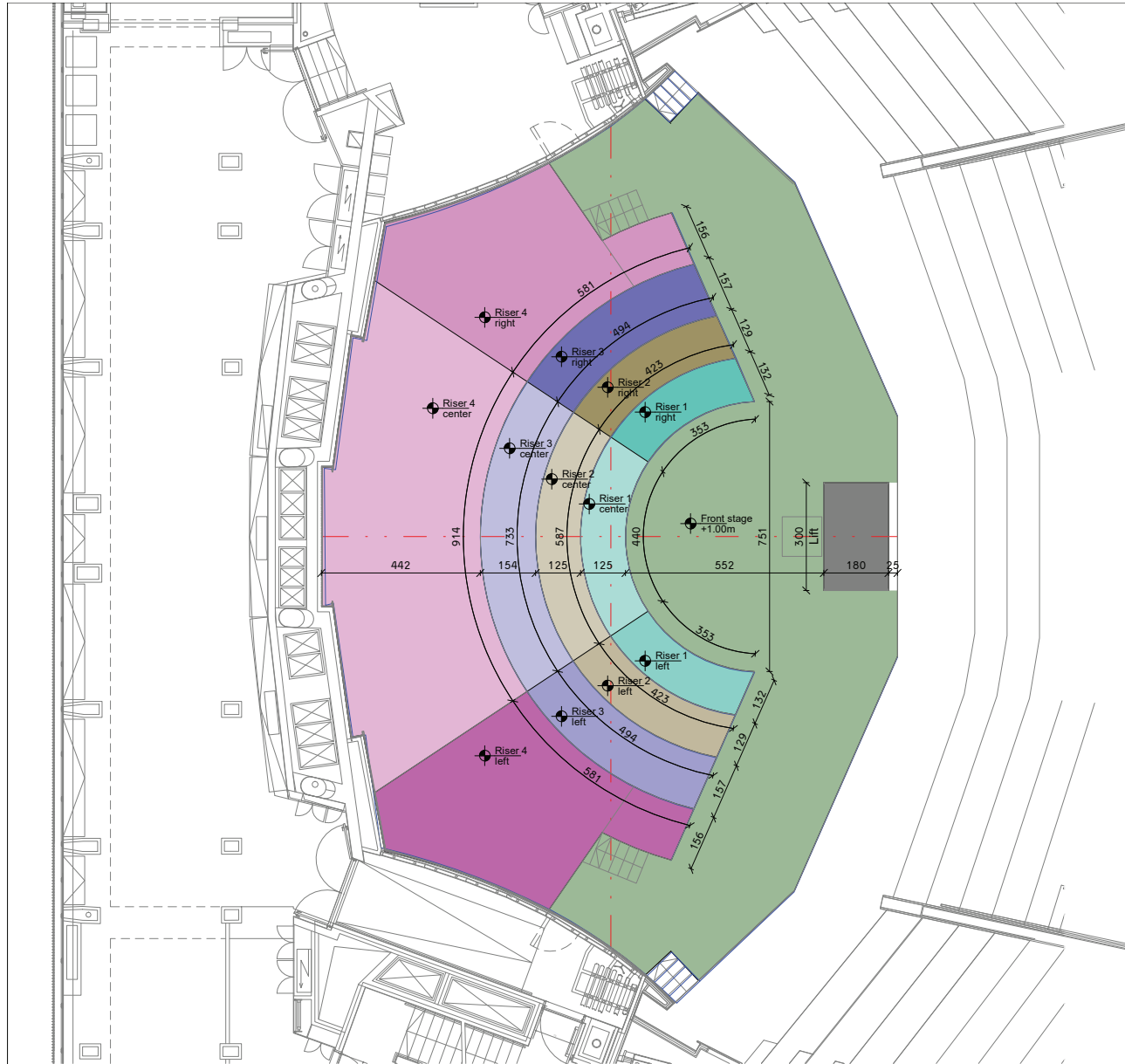
The system is connected to a control system that is controlled by the Hall Operations Manager or an individual on his behalf.


Blueprint of division into hydraulic stages is attached.



**Charles Bronfman Auditorium**  
Tel Aviv Culture Center

## Hydraulic Stages Blueprint





**Charles Bronfman Auditorium**  
Tel Aviv Culture Center

### Technical ride for hall & stage

## Stage plan

Date of update: 24-09-19 9:18:11 AM

- Center line - - - - -
- Drawings are based on surveyor measurement at place (AsIs)
- Do not measure on a printed file
- A CAD file is available for planning purpose

**Color legend**

Front stage	Riser 3 centre
Riser 1 centre	Riser 3 left
Riser 1 left	Riser 3 right
Riser 1 right	Riser 4 centre
Riser 2 centre	Riser 4 left
Riser 2 left	Riser 4 right
Riser 2 right	Stage lift





**Charles Bronfman Auditorium**  
Tel Aviv Culture Center

### **Equipment Load-In**

Equipment load-in area is on Huberman street, through the cargo elevator directly to the backstage areas.

Load-out and load-in are permitted between 06:00 and 22:00.

Any deviation requires advance authorization from the Operations Manager.



### **Stage Entrances**

There are 2 entrances to the stage, one on each side of the stage.

The equipment entry ramp is located at the right stage entrance.



### **Artists' Rooms**

For the convenience of the artists and the production team there are 6 makeup rooms as well as a green room and a kitchenette located on Floor -1 (minus 1).





**Charles Bronfman Auditorium**  
Tel Aviv Culture Center

## **Hall lighting and Work Lighting**

Hall lighting can be adjusted as needed:

1. 100%
2. 50%
3. Concert lighting – enables the audience to read the concert program.
4. Show mode – complete darkness in the hall.
5. Only specific sections of the hall can be darkened on demand, based on the electrical plan.

## **Projection Screens:**

Acoustic shell configuration enables suspending a special roll-up screen on a 17.2 fly bar for translation display or any other need.

When acoustic shells are closed, side screens will be mounted using standalone legs.

Front projection is recommended in the Hall.

Two projector shelves are located on the sides of Block B and Block D, above Row 20.

Permitted load-bearing capacity: up to 50 kg.

A patch can be implemented without adding additional cables.

The connection panels are located adjacent to the projector locations (inquire with the operations manager for details).

## **Stage Enclosure**

Blacks (back screen, legs, wood) are available upon request.

Blacks are also available to conceal acoustic shells as needed.

Gluing a carpet on the stage is prohibited. A black carpet is available upon request.



**Charles Bronfman Auditorium**  
Tel Aviv Culture Center

### **Television and Communications Rooms**

Heichal Hatarbut is equipped with connection points for CCTV, TV broadcast vans and cameras. 2 points are located on the left and right sides of the stage front.

1 point is located backstage, with a window for passing cables to the vans outside the building, and next to it an electric panel for the van.

3 points are located on the railing separating the right, left, and center balconies.

2 additional points at the entrance to the balconies on the sides of Blocks A and E.

1 point in the upper control room above Row 37.

1 point behind the sound point.

### **The Acoustic Shell System**



**Acoustic shell open**



**Acoustic shell closed**

12 mobile acoustic shells are located above the stage.

Acoustic shells have only two modes: open or closed. There are no intermediate modes.

Concert mode – acoustic shells - in closed mode

Other mode – acoustic shells - in open mode

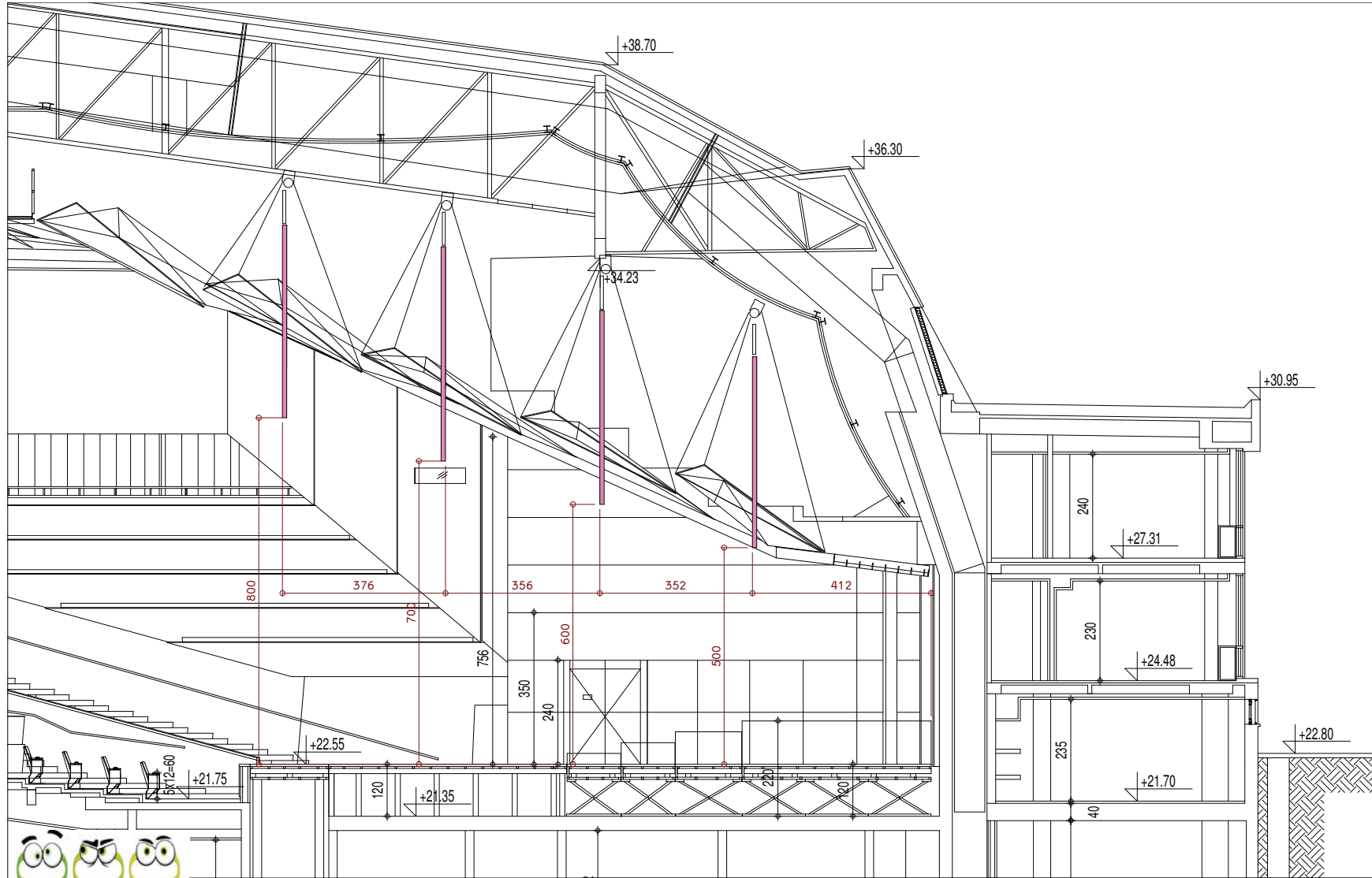
Blueprint for illustration purposes attached.





**Charles Bronfman Auditorium**  
Tel Aviv Culture Center

The following is a cutaway blueprint showing the location and height of the acoustic shells





**Charles Bronfman Auditorium**  
Tel Aviv Culture Center

## **General Highlights and Guidelines**

- \* Follow the instructions of the guards and ushers. They are doing their job.
- \* Do not use the backstage passenger elevator to move equipment.
- \* Equipment may only be brought into the building on carts.
- \* Technical equipment may only be lifted on-stage using the ramp – for any other option please coordinate with the Operations Manager in advance.
- \* Do not connect cables in any way to the stage wood covering around the stage.
- \* Any cable deployed must be affixed to the stage using adhesive tape provided by Heichal Hatarbut.
- \* Camera deployment and location will be coordinated with the hall manager.
- \* Smoking is prohibited throughout the building!!! Smoking is only permitted on the upper balcony or outside the building.
- \* Posting signs or advertisements of any kind on the building walls is prohibited.
- \* Food and drink other than water are prohibited in the hall or on stage.
- \* Guests and/or children and/or associates may not be brought in without advance approval from the operations manager.
- \* Blocking passages is prohibited.



**Photography:** Oded Antman